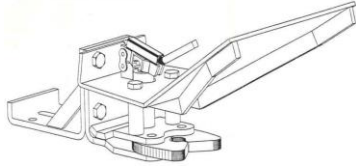


These rugged, time-tested Anderson Hitches are a safe and efficient method of automatically coupling and uncoupling wagons to; Tractors - Balers - Harvesters & Pickers  
Anderson Hitches eliminate the frustrating job of backing into exact position for hook up

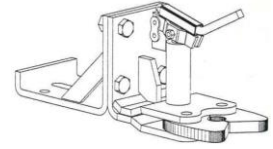
### AUTOMATIC COUPLER C/W BOLT ON BRACKET

Mfg Part #	Wt.	Walco item #
YM-281	20#	141311



Mfg Part #	Wt.	Walco item #
AH-181	38#	230108

- Hardened jaws lock in draw pin until you release it from the driver seat
- Bolts easily on any draw bar
- Heavy duty and compact

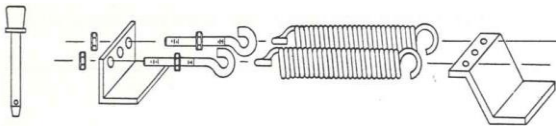


### ANDERSON AUTOMATIC WAGON HITCH C/W BOLT ON BRACKET

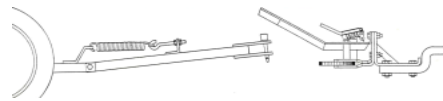
- Makes all wagon connections a simple one-man operation
- Rugged guide rails allow tongue to be approached from wide angle
- Maintains full turning radius
- Safe - eliminates need to be in dangerous pinch area
- All mounting hardware included

### ANDERSON DOUBLE SPRING TONGUE KIT C/W 3/4" x 4 1/2" ANDERSON DRAW PIN

- Two-spring system holds heavy or light tongue in position for connection with Automatic coupler - automatic wagon hitch
- Specially designed draw pin guides tongue into coupler

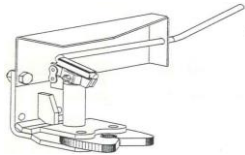


Mfg Part #	Wt.	Walco item #
AH-381	17#	230110



### AUTOMATIC COUPLER C/W 12" HANDLE EXTENSION

- Includes all features of automatic coupler described on page 1
- Has extended pipe handle to allow operation under bale chamber
- Simplifies coupling and uncoupling "Forage King" Hay basket

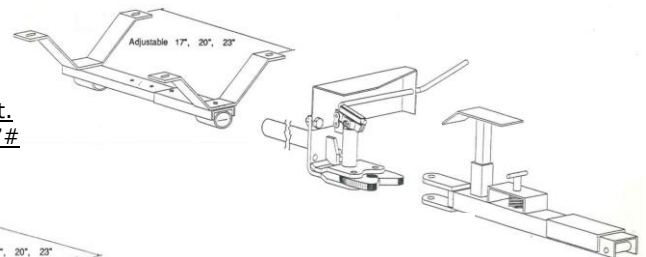


Mfg Part #	Wt.	Walco item #
YM-282	18#	141303

### BALER CENTRE HITCH BRACKET

- Designed to fit most balers
- Required if baler dose not have center hitch

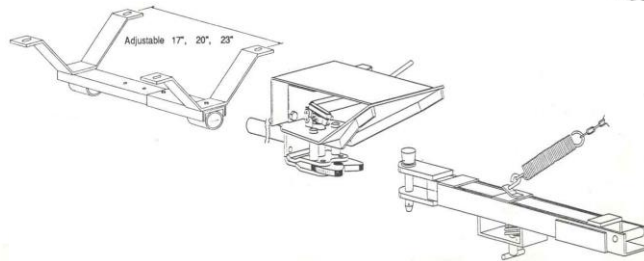
MFG. Part #	Walco item #	141301	Wt.
YM-283	Automatic Coupler c/w 12" handle extension pipe		27#



### BALER CENTRE HITCH BRACKET

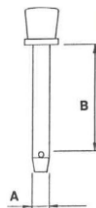
- Designed to fit many balers
- Required if baler dose not have center hitch

Mfg. Part No	Wt.	Walco item #
WC-284	30#	141305



### ANDERSON DRAW PIN

- Hardened draw pin is supplied with Tongue Kit for "Forage King" Hay basket, or can be purchased separately



Mfg. Part No	Description	Wt.	Walco item #
AH-480	3/4" x 4-1/2"	1.5#	230106
AH-481	7/8" x 5-1/2"	1.8#	230107

### BOLT ON BRACKET

- Allows direct mounting on any Anderson Hitch to tractor or implement draw bar

Mfg. Part No	Wt.	Walco item #
YM-580	7#	230109

